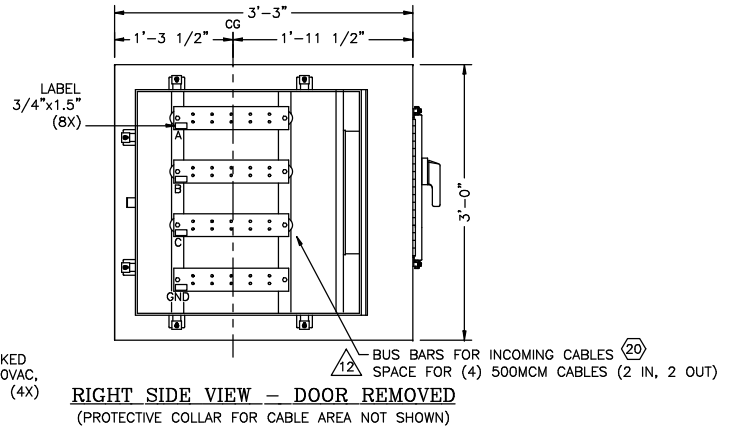
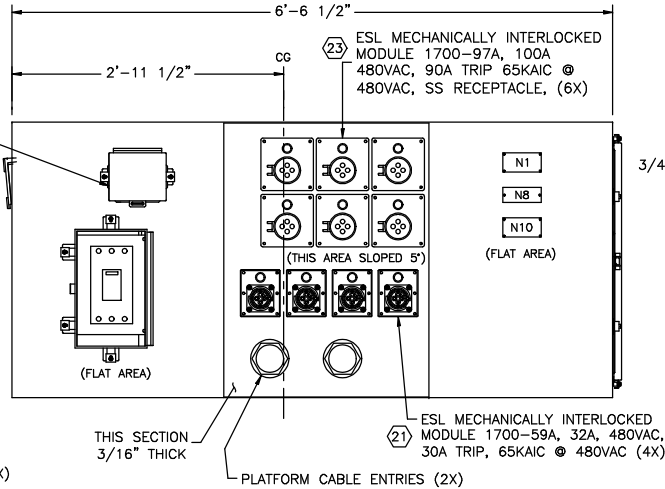
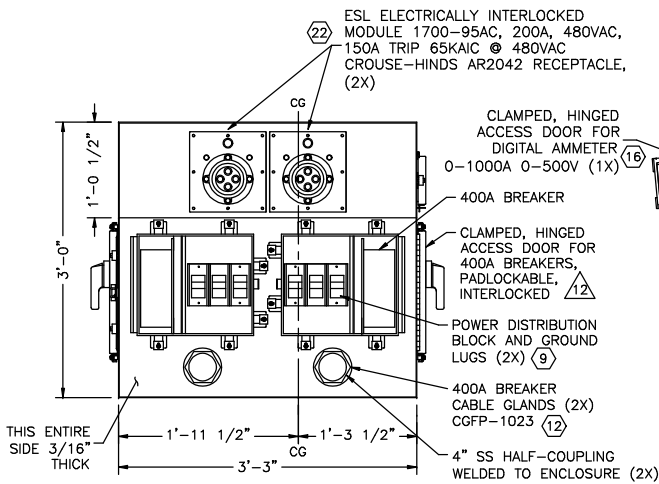


- NOTES:**
- ENCLOSURE MATERIAL IS 304 SS.  
-BOTTOM, TOP, BACK, RIGHT SIDE, SHROUDS AND FRONT (EXCEPT FOR MODULE AREA) 12GA.  
-MODULE AREA IN FRONT, LEFT SIDE: 3/16" THICK.  
-DOORS 10GA.
  - UL LISTED ASSEMBLY.
  - SOME HIDDEN LINES NOT SHOWN FOR CLARITY.
  - REFER TO DWG. 0900-84 FOR BILL OF MATERIALS.



**LEFT SIDE VIEW - DOORS REMOVED**  
(PROTECTIVE COLLAR FOR CABLE AREA NOT SHOWN)

**FRONT VIEW - DOOR REMOVED**  
(PROTECTIVE COLLAR FOR CABLE AREA NOT SHOWN)

**RIGHT SIDE VIEW - DOOR REMOVED**  
(PROTECTIVE COLLAR FOR CABLE AREA NOT SHOWN)

C	11/2/04	MJY	AS BUILT
B	10/1/03	JGR	APPROVED BY CUSTOMER
A	9/11/03	JY	APPROVED BY CUSTOMER
REV	DATE	BY	COMMENTS
This document and the data disclosed herein or herewith is not to be reproduced, used or disclosed in whole or in part to anyone without the written permission of ESL.			

UNLESS OTHERWISE SPECIFIED: DIMENSIONS ARE IN INCHES	
DECIMALS	ANGULAR
.XX ±.01	±1/2"
.XXX ±.005	
BREAK ALL SHARP EDGES AND BURRS .005 - .010	
DO NOT SCALE DRAWING	
MATERIAL	
FINISH POWDER COAT ANSI 61 GRAY	
DIMENSIONS TO BE HELD AFTER PLATING AND HEAT TREATING	

<b>ESL</b> ESL POWER SYSTEMS INC. 2800 PALISADES DRIVE CORONA, CALIFORNIA 92880 (951) 739-7020			
SCALE	NTS	ENGR	DHC
DWN	JY	DATE	4/23/02
APPR		DATE	
<b>NORTHROP GRUMMAN SHIP SYSTEMS</b>			
<b>ENCLOSURE LAYOUT</b>			
DIRECTORY	SUB DIRECTORY	DRAWING FILE	SHT OF
REEFPART	2208	2208-42	1 1