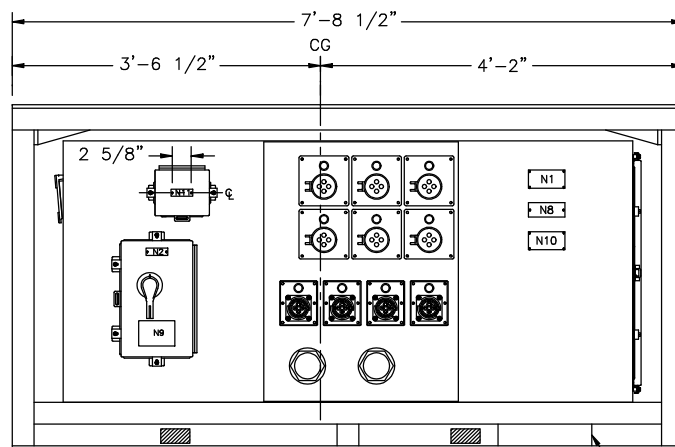
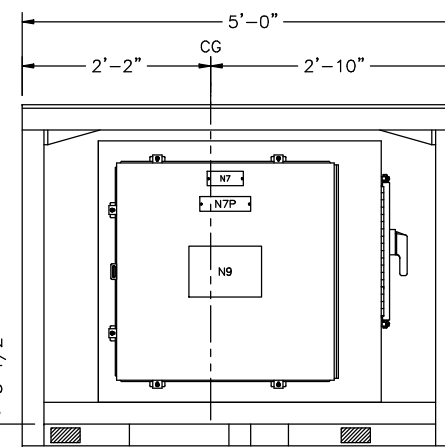


REAR VIEW

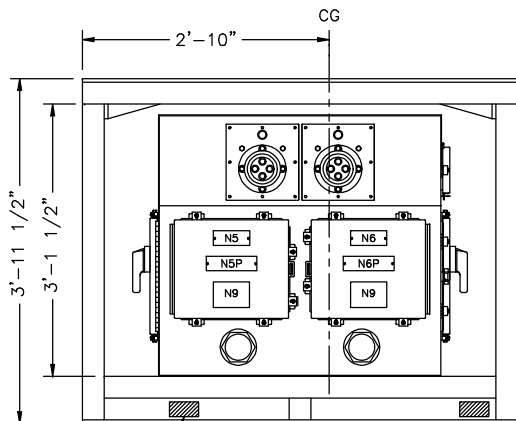


FRONT VIEW

PROTECTIVE COLLAR



RIGHT END VIEW



LEFT END VIEW

APPROXIMATE FORKLIFT ENTRY AND LIFT POINTS (TYP)

EST. ENCLOSURE WEIGHT: 1300 LBS.
 EST. CAGE WEIGHT: 1500 LBS.
 EST. TOTAL WEIGHT: 2800 LBS.

PARTS LIST				
ITEM	QTY	PART NO.	MFR	DESCRIPTION
1	1	1003-80-1	ESL	Assembly, Enclosure, Mechanical
2	1	1003-80-2	ESL	Cage
3	1	1003-80-7	ESL	Collar for Cable Entry

NOTE:

1. SEE TOP VIEW ON DWG. 2208-44-T.

REV	DATE	BY	COMMENTS
C	11/2/04	MJY	AS BUILT
B	10/1/03	JGR	APPROVED BY CUSTOMER
A	9/11/03	JY	APPROVED BY CUSTOMER

This document and the data disclosed herein or herewith is not to be reproduced, used or disclosed in whole or in part to anyone without the written permission of ESL.

UNLESS OTHERWISE SPECIFIED:
 DIMENSIONS ARE IN INCHES
 TOLERANCES
 DECIMALS .XX ±.01
 .XXX ±.005
 ANGULAR ±1/2°
 BREAK ALL SHARP EDGES
 AND BURRS .005 - .010
 DO NOT SCALE DRAWING

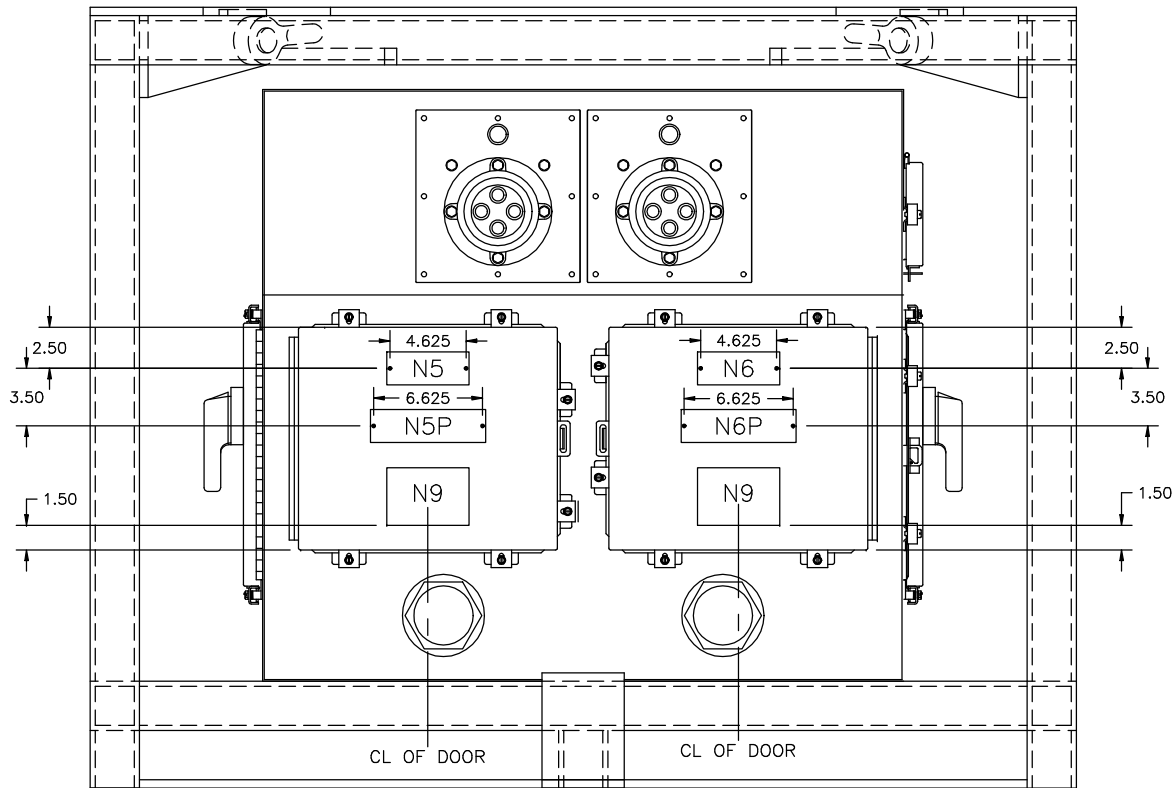
MATERIAL
 FINISH
 DIMENSIONS TO BE HELD AFTER
 PLATING AND HEAT TREATING

ESL ESL POWER SYSTEMS INC.
 2800 PALISADES DRIVE
 CORONA, CALIFORNIA 92880
 (951) 739-7020

SCALE	NTS	ENGR	DHC	APPR
DWN	JY	DATE	4/23/02	DATE

NORTHROP GRUMMAN
 SHIP SYSTEMS
 ASSEMBLY, 12-GANG
 POWER DISTRIBUTION

DIRECTORY	SUB DIRECTORY	DRAWING FILE	SHT	OF
REEFPART	2208	2208-44	1	5



LEFT END VIEW


B	11/0/04	JY	AS BUILT
A	9/11/03	JY	APPROVED BY CUSTOMER
REV	DATE	BY	COMMENTS

This document and the data disclosed herein or herewith is not to be reproduced, used or disclosed in whole or in part to anyone without the written permission of ESL.

UNLESS OTHERWISE SPECIFIED:
 DIMENSIONS ARE IN INCHES
 TOLERANCES
 DECIMALS .XX ±.01
 .XXX ±.005
 ANGULAR ±1/2°
 BREAK ALL SHARP EDGES
 AND BURRS .005 - .010
 DO NOT SCALE DRAWING

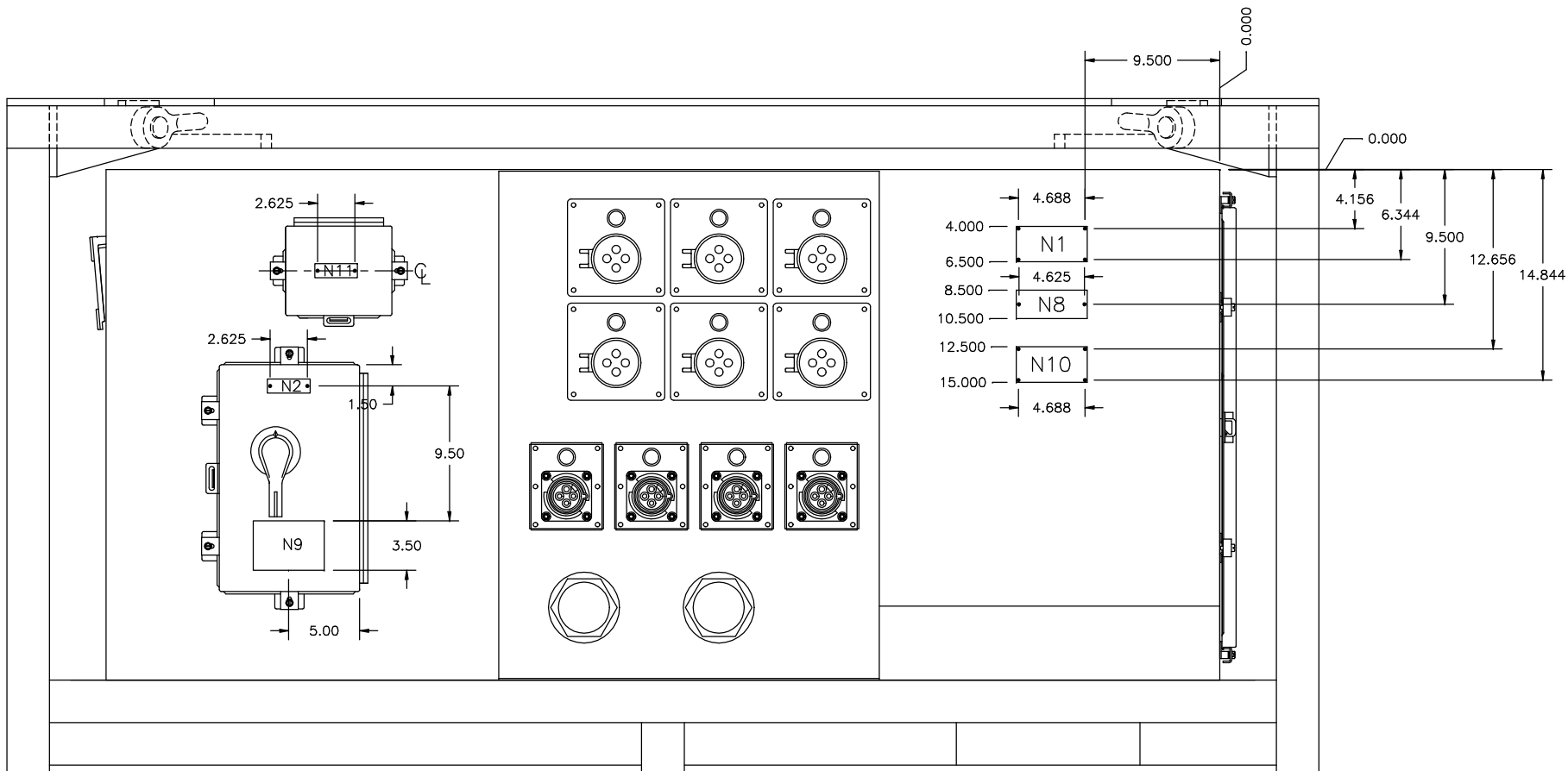
MATERIAL
 304 STAINLESS STEEL

FINISH
 POWDER COATED ANSI 61 GRAY
 DIMENSIONS TO BE HELD AFTER
 PLATING AND HEAT TREATING

 ESL POWER SYSTEMS INC. 2800 PALISADES DRIVE CORONA, CALIFORNIA 92880 (951) 739-7020			
SCALE	NTS	ENGR	DHC
DWN	JY	DATE	9/25/02
APPR		DATE	
NORTHROP GRUMMAN SHIP SYSTEMS			

NAMEPLATE PLACEMENT - LEFT END

DIRECTORY	SUB DIRECTORY	DRAWING FILE	SHT OF
REEFPART	2208	2208-44-L	2 5




FRONT VIEW

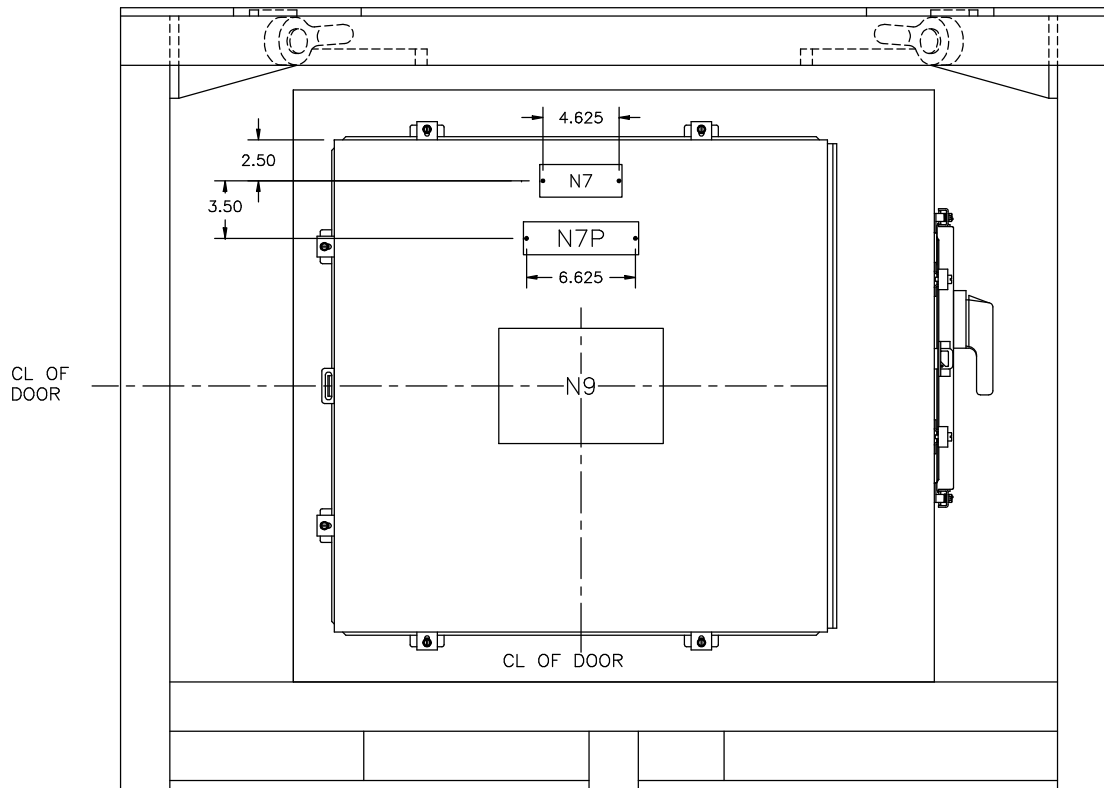
REV	DATE	BY	COMMENTS
B	11/2/04	JY	AS BUILT
A	9/11/03	JY	APPROVED BY CUSTOMER

This document and the data disclosed herein or herewith is not to be reproduced, used or disclosed in whole or in part to anyone without the written permission of ESL.

UNLESS OTHERWISE SPECIFIED:
 DIMENSIONS ARE IN INCHES
 TOLERANCES
 DECIMALS .XX ±.01
 .XXX ±.005
 ANGULAR ±1/2°
 BREAK ALL SHARP EDGES
 AND BURRS .005 - .010
 DO NOT SCALE DRAWING
 MATERIAL
 304 STAINLESS STEEL

FINISH
 POWDER COATED ANSI 61 GRAY
 DIMENSIONS TO BE HELD AFTER
 PLATING AND HEAT TREATING

 ESL POWER SYSTEMS INC. 2800 PALISADES DRIVE CORONA, CALIFORNIA 92880 (951) 739-7020			
SCALE	NTS	ENGR	DHC
DWN	JY	DATE	9/25/02
APPR DATE			
NORTHROP GRUMMAN SHIP SYSTEMS			
NAMEPLATE PLACEMENT - FRONT			
DIRECTORY	SUB DIRECTORY	DRAWING FILE	SHT OF
REEFPART	2208	2208-44-F	3 5




RIGHT END VIEW

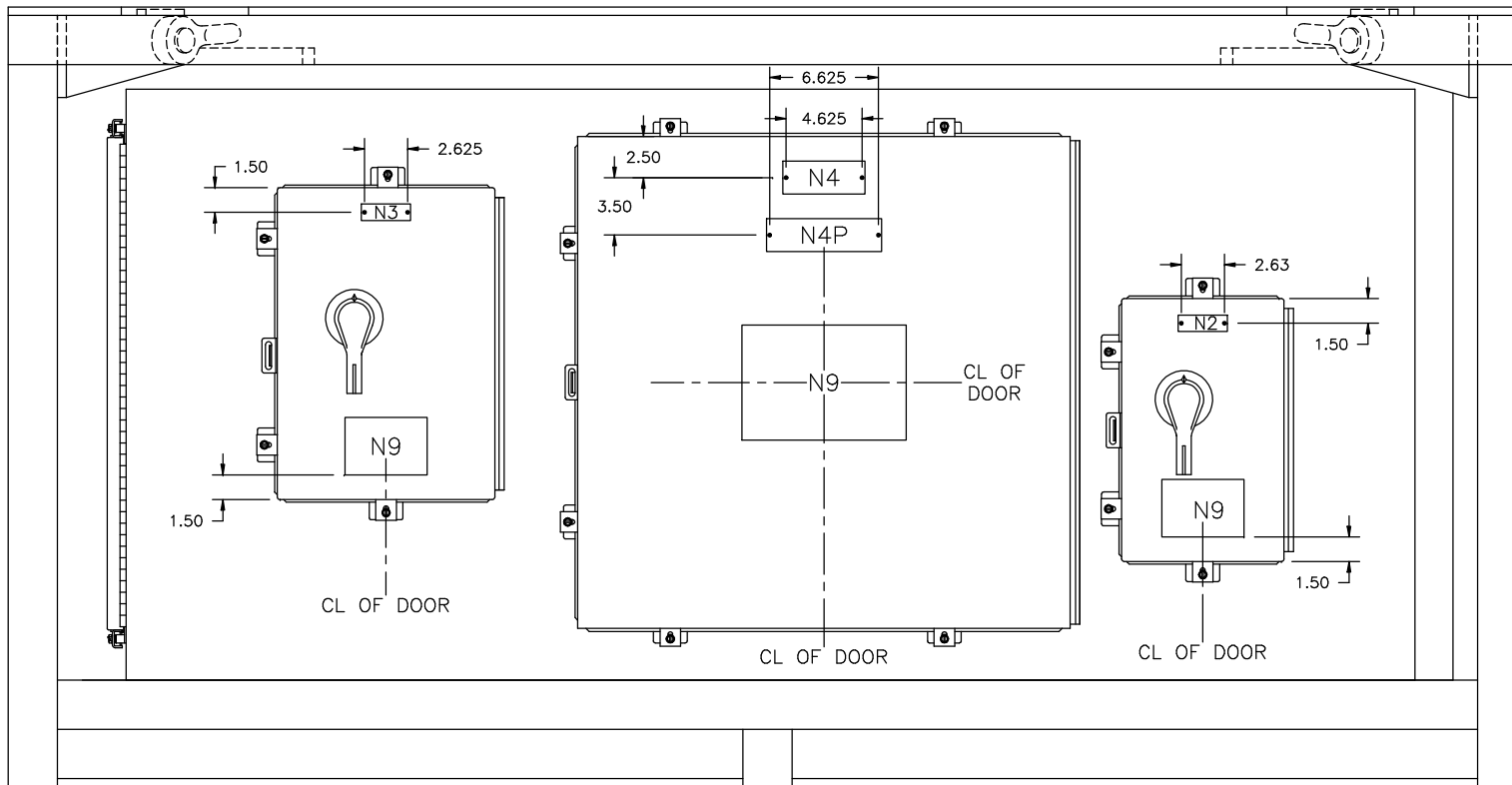
REV	DATE	BY	COMMENTS
B	11/2/04	MJY	AS BUILT
A	9/11/03	JY	APPROVED BY CUSTOMER

This document and the data disclosed herein or herewith is not to be reproduced, used or disclosed in whole or in part to anyone without the written permission of ESL.

UNLESS OTHERWISE SPECIFIED:
 DIMENSIONS ARE IN INCHES
 TOLERANCES
 DECIMALS .XX ±.01 ANGULAR ±1/2°
 .XXX ±.005
 BREAK ALL SHARP EDGES
 AND BURRS .005 - .010
 DO NOT SCALE DRAWING
 MATERIAL
 304 STAINLESS STEEL

FINISH
 POWDER COATED ANSI 61 GRAY
 DIMENSIONS TO BE HELD AFTER
 PLATING AND HEAT TREATING

 ESL POWER SYSTEMS INC. 2800 PALISADES DRIVE CORONA, CALIFORNIA 92880 (951) 739-7020			
SCALE	NTS	ENGR	DHC
DWN	JY	DATE	9/25/02
		APPR	DATE
NORTHROP GRUMMAN SHIP SYSTEMS			
NAMEPLATE PLACEMENT - RIGHT END			
DIRECTORY	SUB DIRECTORY	DRAWING FILE	SHIT OF
REEFPART	2208	2208-44-R	4 5



BACK (REAR) VIEW

REV	DATE	BY	COMMENTS
B	11/2/04	JY	AS BUILT
A	9/11/03	JY	APPROVED BY CUSTOMER

This document and the data disclosed herein or herewith is not to be reproduced, used or disclosed in whole or in part to anyone without the written permission of ESL.

UNLESS OTHERWISE SPECIFIED:
 DIMENSIONS ARE IN INCHES
 TOLERANCES
 DECIMALS .XX ±.01
 .XXX ±.005
 ANGULAR ±1/2°
 BREAK ALL SHARP EDGES
 AND BURRS .005 - .010
 DO NOT SCALE DRAWING

MATERIAL
 304 STAINLESS STEEL

FINISH
 POWDER COATED ANSI 61 GRAY
 DIMENSIONS TO BE HELD AFTER
 PLATING AND HEAT TREATING

ESL ESL POWER SYSTEMS INC.
 2800 PALISADES DRIVE
 CORONA, CALIFORNIA 92880
 (951) 739-7020

SCALE	NTS	ENGR	DHC	APPR
DWN	JY	DATE	9/25/02	DATE

**NORTHROP GRUMMAN
 SHIP SYSTEMS**

NAMEPLATE PLACEMENT - BACK

DIRECTORY	SUB DIRECTORY	DRAWING FILE	SHT OF
REEFPART	2208	2208-44-B	5 5