

352F

Hydraulic Excavator



SPECIFICATIONS



Engine

Engine Model	Cat® C13 ACERT™	
Net Power – SAE J1349	311 kW	417 hp

Drive

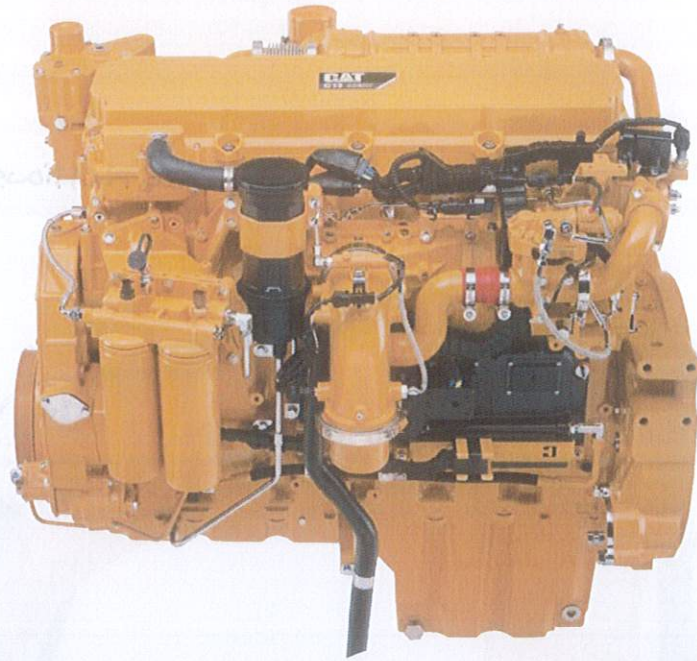
Maximum Travel Speed	4.7 km/h	2.9 mph
Maximum Drawbar Pull	335 kN	75,300 lbf

Weights

Maximum Weight	52 500 kg	115,700 lb
----------------	-----------	------------

The 352F L is built to take on your up-close and far-out excavating tasks. The 52-ton machine features a variable gauge undercarriage that retracts for transport and expands to help increase stability and lift capability, particularly helpful when you do a lot of work over the side. Where the real power comes in is through the integrated engine, hydraulic, and work tool systems. You can move tons of material – literally – every hour, on the hour, all day long with a great deal of speed, precision, and efficiency.

Following are the built-in benefits and available options that make 352F L an outstanding performer and an excellent choice for your line of work:



Engine

- The C13 ACERT engine meets U.S. Environmental Protection Agency (EPA) Tier 4 Final emission standards.
- The emissions package works behind the scenes without interrupting your job.
- Engine speed control automatically lowers rpm when the machine doesn't need it to help you save fuel.
- Three power modes – high, standard, and eco – and automatic engine idle shutdown help you more actively manage fuel consumption.

Hydraulics

- Major hydraulic components are located close together so shorter tubes and lines can be used, leading to less friction loss, reduced pressure drops, and more power to the ground.
- The main control valve opens slowly when the range of joystick lever movement is small and opens rapidly when movement is high, putting flow where you need it when you need it for smoother operation and greater efficiency.
- Electric boom and stick regeneration keeps oil flow at the head and rod ends of the cylinders instead of going back to the tank, which results in less pressure loss for higher controllability, more productivity, and lower operating costs.

Contents

Key Features	2
Specifications	4
Standard Equipment	13
Optional Equipment	14
Notes	15

Key Features

Built-in benefits and available options



Cab

- The full-size roll-over protective structure (ROPS) cab is both quiet and comfortable.
- The automatic climate control system maintains consistent cab temperature.
- Joysticks, armrests, and seats adjust to your preference.
- Seats include heated and cooled options.
- The LED monitor is programmable in 42 languages.
- A drink holder, storage areas, and auxiliary power outlets are in easy-to-reach areas.



Structures

- Heavy-duty (HD) reach and mass excavation (ME) booms and sticks are available.
- HD reach booms and sticks offer you excellent all-around versatility for general excavation work like multipurpose digging and loading.
- ME booms and sticks provide higher digging forces for heavy material like rock due to special boom and stick geometry, bucket linkage, and cylinders built for greater durability.
- The upper frame is built with special mounts to support the ROPS cab.
- The lower frame is reinforced to enhance component durability.
- Track shoes, links, rollers, idlers, and final drives are built with high-tensile-strength steel.
- Grease-lubricated track link prevents dirt and debris from entering.
- The counterweight is bolted directly to the main frame for added rigidity.

Work Tools

- Multiple Cat Work Tools – designed specifically for Cat machines – are available for a wide range of applications.
- Cat quick couplers allow you to switch from one tool to another in a matter of minutes.
- Cat tool control remembers pressures and flows for up to 10 tools so you can quickly get to work after each tool change.

Serviceability

- Routine maintenance items like grease points, fluid taps, filters, and drain tubes can be reached at ground level.
- Compartment doors are designed to prevent debris entry, and they securely latch in place to enhance ease of service.
- The side-by-side cooling system is efficient and easy to clean, and it is capable of being upgraded for high-ambient conditions.

Technology Options

- Cat Grade Control delivers 2D bucket tip elevation guidance to the cab to help you create precise planes and slopes with ease, eliminating the need for staking and checking.
- Cat AccuGrade™ provides 3D guidance for making complex cuts and contours.
- Product Link™/VisionLink® connects you to your machine, providing access to its location, hours, fuel consumption, idle time, events, and diagnostic codes.

352F Hydraulic Excavator Specifications

Engine

Engine Model	Cat C13 ACERT	
Net Power – SAE J1349	311 kW	417 hp
Gross Power – SAE J1995	322 kW	432 hp
Bore	130 mm	5.12 in
Stroke	157 mm	6.18 in
Displacement	12.5 L	763 in ³

Weights

Maximum Weight	52 500 kg	115,700 lb
----------------	-----------	------------

- 6.9 m (22'8") Reach boom, R3.9TB (12'10") HD stick, 9.0 mt (9.9 t) counterweight, Long VG undercarriage, 3.1 m³ (4.1 yd³) bucket, 900 mm (35") triple grouser shoes.

Hydraulic System

Main System – Maximum Flow (Total)	770 L/min	203 gal/min
Swing System – Maximum Flow	385 L/min	102 gal/min
Maximum Pressure – Equipment	35 000 kPa	5,076 psi
Maximum Pressure – Equipment (Lift mode)	38 000 kPa	5,512 psi
Maximum Pressure – Travel	35 000 kPa	5,076 psi
Maximum Pressure – Swing	27 500 kPa	3,989 psi
Pilot System – Maximum Flow	27 L/min	7.1 gal/min
Pilot System – Maximum Pressure	4120 kPa	598 psi
Boom Cylinder – Bore	170 mm	6.69 in
Boom Cylinder – Stroke	1524 mm	60.00 in
Stick Cylinder – Bore	190 mm	7.48 in
Stick Cylinder – Stroke	1758 mm	69.21 in
TB Family Bucket Cylinder – Bore	160 mm	6.30 in
TB Family Bucket Cylinder – Stroke	1356 mm	53.39 in

Drive

Maximum Travel Speed	4.7 km/h	2.9 mph
Maximum Drawbar Pull	335 kN	75,300 lbf

Swing Mechanism

Swing Speed	8.7 rpm	
Swing Torque	148.5 kN·m	109,500 lbf·ft

Service Refill Capacities

Fuel Tank Capacity	720 L	190 gal
Cooling System	50 L	13.2 gal
Engine Oil (with filter)	38 L	10 gal
Swing Drive (each)	10 L	2.6 gal
Final Drive (each)	15 L	4.0 gal
Hydraulic System (including tank)	570 L	150.6 gal
Hydraulic Tank	407 L	107.5 gal
DEF Tank	41 L	11 gal

Track

Number of Shoes (each side)	
Long Variable Gauge Undercarriage	52
Number of Track Rollers (each side)	
Long Variable Gauge Undercarriage	9
Number of Carrier Rollers (each side)	
Long Variable Gauge Undercarriage	3

Sound Performance

Operator Noise (Closed) – ISO 6396	69 dB(A)
Spectator Noise – ISO 6395	106 dB(A)

- When properly installed and maintained, the cab offered by Caterpillar, when tested with doors and windows closed according to ANSI/SAE J1166 OCT98, meets OSHA and MSHA requirements for operator sound exposure limits in effect at time of manufacture.
- Hearing protection may be needed when operating with an open operator station and cab (when not properly maintained or doors/windows open) for extended periods or in noisy environment.

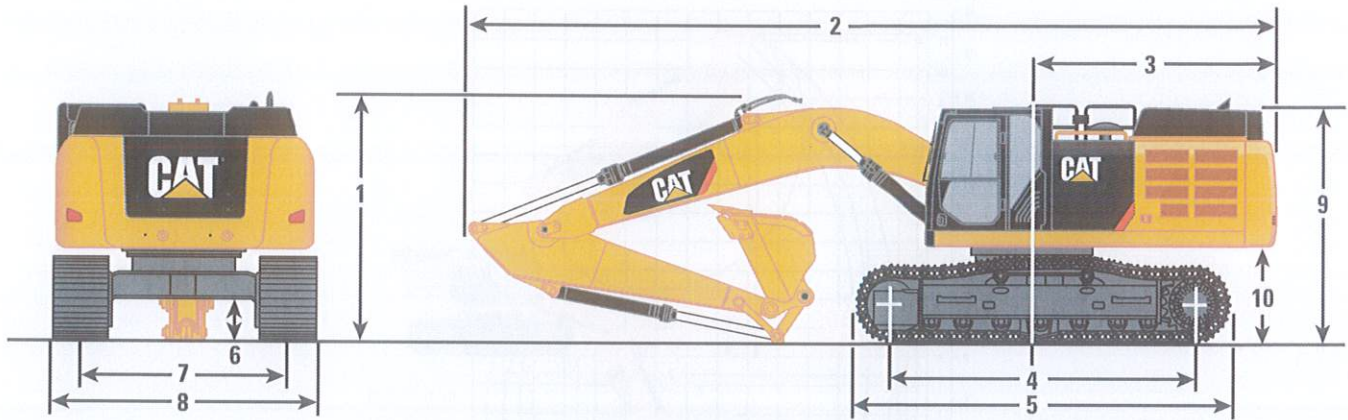
Standards

Brakes	ISO 10265
Cab/FOGS	SAE J1356
Cab/ROPS	ISO 12117-2

352F Hydraulic Excavator Specifications

Dimensions – Long VG Undercarriage

All dimensions are approximate.



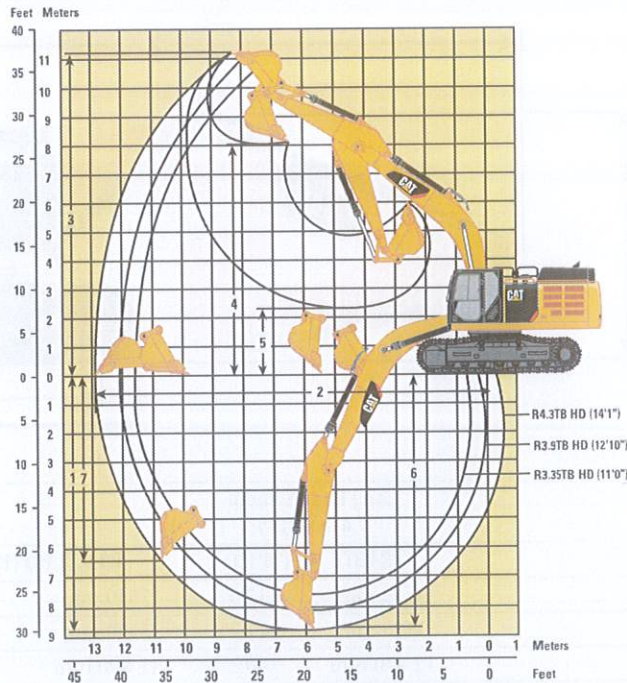
Stick	Long Reach Boom 7.4 m (24'3")		Reach Boom 6.9 m (22'8")			
	R4.3TB HD (14'1")	R3.9TB HD (12'10")	R3.9TB HD (12'10")	R3.35TB HD (11'0")		
1 Shipping Height to Boom	3650 mm	12'0"	3650 mm	12'0"	3550 mm	11'8"
Shipping Height with Handrail	3520 mm	11'7"	3520 mm	11'7"	3520 mm	11'7"
2 Shipping Length	12 370 mm	40'7"	11 890 mm	39'0"	11 820 mm	38'9"
3 Tail Swing Radius	3760 mm	12'4"	3760 mm	12'4"	3760 mm	12'4"
4 Length to Center of Rollers	4340 mm	14'3"	4340 mm	14'3"	4340 mm	14'3"
5 Track Length	5380 mm	17'8"	5380 mm	17'8"	5380 mm	17'8"
6 Ground Clearance						
Including Shoe Lug Height	710 mm	2'4"	710 mm	2'4"	710 mm	2'4"
Not Including Shoe Lug Height	740 mm	2'5"	740 mm	2'5"	740 mm	2'5"
7 Track Gauge (Expanded)	2890 mm	9'6"	2890 mm	9'6"	2890 mm	9'6"
Track Gauge (Retracted)	2390 mm	7'10"	2390 mm	7'10"	2390 mm	7'10"
8 Transport Width (Expanded)						
600 mm (24") Shoes	3490 mm	11'5"	3490 mm	11'5"	3490 mm	11'5"
750 mm (30") Shoes	3640 mm	11'11"	3640 mm	11'11"	3640 mm	11'11"
900 mm (35") Shoes	3790 mm	12'5"	3790 mm	12'5"	3790 mm	12'5"
Transport Width (Retracted)						
600 mm (24") Shoes	3000 mm	9'10"	3000 mm	9'10"	3000 mm	9'10"
750 mm (30") Shoes	3240 mm	10'8"	3240 mm	10'8"	3240 mm	10'8"
900 mm (35") Shoes	3290 mm	10'10"	3290 mm	10'10"	3290 mm	10'10"
9 Cab Height	3370 mm	11'1"	3370 mm	11'1"	3370 mm	11'1"
Cab Height with Top Guard	3540 mm	11'7"	3540 mm	11'7"	3540 mm	11'7"
10 Counterweight Clearance*	1430 mm	4'8"	1430 mm	4'8"	1430 mm	4'8"

*Without shoe lug height.

352F Hydraulic Excavator Specifications

Working Ranges – Long VG Undercarriage

All dimensions are approximate.



Stick	Long Reach Boom 7.4 m (24'3")		Reach Boom 6.9 m (22'8")			
	R4.3TB HD (14'1")	R3.9TB HD (12'10")	R3.35TB HD (11'0")			
1 Maximum Digging Depth	8790 mm	28'10"	8060 mm	26'5"	7510 mm	24'8"
2 Maximum Reach at Ground Level	12 940 mm	42'5"	12 120 mm	39'9"	11 710 mm	38'5"
3 Maximum Cutting Height	11 320 mm	37'2"	10 880 mm	35'8"	10 970 mm	36'0"
4 Maximum Loading Height	8020 mm	26'4"	7570 mm	24'10"	7580 mm	24'10"
5 Minimum Loading Height	2370 mm	7'9"	2350 mm	7'9"	2900 mm	9'6"
6 Maximum Depth Cut for 2440 mm (8'0") Level Bottom	8660 mm	28'5"	7920 mm	26'0"	7360 mm	24'2"
7 Maximum Vertical Wall Digging Depth	6400 mm	21'0"	5810 mm	19'1"	5680 mm	18'8"

352F Hydraulic Excavator Specifications

Operating Weights and Ground Pressures

	900 mm (35") Triple Grouser Shoes		750 mm (30") Triple Grouser Shoes		600 mm (24") Double Grouser Shoes	
	kg (lb)	kPa (psi)	kg (lb)	kPa (psi)	kg (lb)	kPa (psi)
Long VG Undercarriage						
Long Reach Boom – 7.4 m (24'3")						
R4.3TB HD (14'1")	52 900 (116,600)	61 (8.8)	52 200 (115,100)	73 (10.6)	51 500 (113,500)	90 (13.1)
Reach Boom – 6.9 m (22'8")						
R3.9TB HD (12'10")	52 500 (115,700)	61 (8.8)	51 700 (114,000)	72 (10.4)	51 100 (112,700)	89 (12.9)
R3.35TB HD (11'0")	52 300 (115,300)	61 (8.8)	51 500 (113,500)	72 (10.4)	30 900 (68,100)	54 (7.8)

Major Component Weights

	kg	lb
Base Machine (with boom cylinder, without counterweight, front linkage and track)		
Long VG Undercarriage	27 000	59,500
Counterweight		
9.0 mt (9.9 t)	9000	19,800
Boom (includes lines, pins and stick cylinder)		
Long Reach Boom – 7.4 m (24'3")	5190	11,400
Reach Boom – 6.9 m (22'8")	4630	10,200
Stick (includes lines, pins, bucket linkage and bucket cylinder)		
R4.3TB HD (14'1")	2990	6,600
R3.9TB HD (12'10")	2760	6,100
R3.35TB HD (11'0")	2540	5,600
Track Shoes (Long VG/per two tracks)		
600 mm (24") double grouser	5290	11,700
750 mm (30") triple grouser	5940	13,100
900 mm (35") triple grouser	6700	14,800
Buckets		
TB1880GD – 3.10 m ³ (4.05 yd ³)	2440	5,400

All weights are rounded up to nearest 10 kg and lb except for buckets. Kg and lb were rounded up separately so some of the kg and lb do not match.

Base machine includes 75 kg (165 lb) operator weight, 90% fuel weight, and undercarriage with center guard.

352F Hydraulic Excavator Specifications

Bucket and Stick Forces

Stick	Long Reach Boom 7.4 m (24'3")		Reach Boom 6.9 m (22'8")			
	R4.3TB HD (14'1")		R3.9TB HD (12'10")		R3.35TB HD (11'0")	
TB Linkage						
General Duty						
Bucket Digging Force (SAE)	—	—	237 kN	53,300 lbf	237 kN	53,300 lbf
Stick Digging Force (SAE)	—	—	180 kN	40,500 lbf	195 kN	43,800 lbf
Heavy Duty						
Bucket Digging Force (SAE)	234 kN	52,610 lbf	235 kN	52,830 lbf	235 kN	52,830 lbf
Stick Digging Force (SAE)	167 kN	37,540 lbf	179 kN	40,240 lbf	195 kN	43,840 lbf
Severe Duty						
Bucket Digging Force (SAE)	228 kN	51,260 lbf	229 kN	51,480 lbf	229 kN	51,480 lbf
Stick Digging Force (SAE)	166 kN	37,320 lbf	178 kN	40,020 lbf	193 kN	43,390 lbf
Extreme Duty						
Bucket Digging Force (SAE)	228 kN	51,260 lbf	229 kN	51,480 lbf	229 kN	51,480 lbf
Stick Digging Force (SAE)	166 kN	37,320 lbf	178 kN	40,020 lbf	193 kN	43,390 lbf

352F Hydraulic Excavator Specifications

352F L Attachment Guide*

	Linkage	Width		Capacity		Weight		Fill	Long Reach Boom	Reach Boom		
		mm	in	m ³	yd ³	kg	lb			%	R4.3 HD (14'1")	R3.9 HD (12'10")
Buckets – with Pin Grabber Coupler												
General Duty (GDC)	TB	900	36	1.23	1.60	1441	3,176	100	●	●	●	
	TB	1200	48	1.80	2.36	1676	3,694	100	●	●	●	
	TB	1350	54	2.10	2.74	1792	3,950	100	⊙	●	●	
	TB	1500	60	2.39	3.13	1943	4,282	100	⊖	●	⊙	
	TB	1700	68	2.78	3.64	2128	4,690	100	○	⊙	⊖	
	TB	1850	74	3.08	4.04	2254	4,968	100	○	⊖	○	

The above loads are in compliance with hydraulic excavator standard EN474, they do not exceed 87% of hydraulic lifting capacity or 75% of tipping capacity with front linkage fully extended at ground line with bucket curled.

Capacity based on ISO 7451.

Bucket weight with long tips.

Maximum Material Density:

- 2100 kg/m³ (3,500 lb/yd³)
- ⊙ 1800 kg/m³ (3,000 lb/yd³)
- ⊖ 1500 kg/m³ (2,500 lb/yd³)
- 1200 kg/m³ (2,000 lb/yd³)

Caterpillar recommends using appropriate work tools to maximize the value customers receive from our products. Use of work tools, including buckets, which are outside of Caterpillar's recommendations or specifications for weight, dimensions, flows, pressures, etc. may result in less-than-optimal performance, including but not limited to reductions in production, stability, reliability, and component durability. Improper use of a work tool resulting in sweeping, prying, twisting and/or catching of heavy loads will reduce the life of the boom and stick.

352F Work Tool Offering Guide*

Boom Type	Long Reach Boom HD	Reach Boom HD	
	R4.3 HD (14'1")	R3.9 HD (12'10")	R3.35 HD (11'0")
Stick Size	H160E s H180E s **	H160E s H180E s **	H160E s H180E s
Hydraulic Hammer			
Multi-Processor	MP30 CC Jaw ** MP30 CR Jaw ** MP30 PP Jaw ** MP30 PS Jaw ** MP30 S Jaw ** MP30 TS Jaw **	MP30 CC Jaw MP30 CR Jaw MP30 PP Jaw ** MP30 PS Jaw MP30 S Jaw MP30 TS Jaw **	MP30 CC Jaw MP30 CR Jaw MP30 PP Jaw MP30 PS Jaw MP30 S Jaw MP30 TS Jaw **
Pulverizer	P235 **	P235	P235
Demolition and Sorting Grapple	G330	G330	G330
Mobile Scrap and Demolition Shear	S340B *** S365C # S385C #	S340B *** S365C # S385C #	S340B ** S365C # S385C #

Orange Peel Grapple

Rippers

Center-Lock Pin Grabber Coupler

Dedicated Quick Coupler

These work tools are available for the 352F.
Consult your Cat dealer for proper match.

* Matches are dependent on excavator configurations. Consult your Cat dealer for proper work tool match.

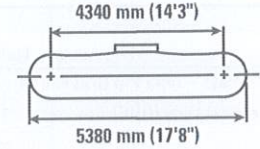
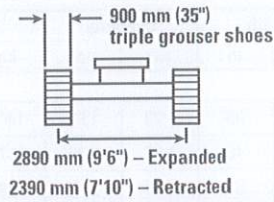
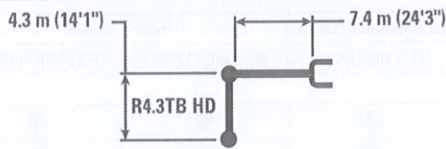
** Pin-on or dedicated coupler


*** Pin-on only

Boom mount

352F Hydraulic Excavator Specifications

Long Reach Boom (Long VG Undercarriage) Lift Capacities – Counterweight: 9.0 mt (9.9 t) – Heavy Lift: On



		1.5 m/5.0 ft		3.0 m/10.0 ft		4.5 m/15.0 ft		6.0 m/20.0 ft		7.5 m/25.0 ft		9.0 m/30.0 ft		10.5 m/35.0 ft				m ft
		kg lb	kg lb	kg lb	kg lb	kg lb	kg lb	kg lb	kg lb	kg lb	kg lb	kg lb	kg lb	kg lb	kg lb	kg lb	kg lb	
9.0 m 30.0 ft	kg lb											*7150 *7150				*7100 *15,700	*7100 *15,700	9.02 29.17
7.5 m 25.0 ft	kg lb											*9700 *21,300	9350 20,050			*6900 *15,200	*6900 *15,200	9.97 32.50
6.0 m 20.0 ft	kg lb											*10 150 *22,100	9150 19,700	*7650 7050		*6900 *15,200	6900 *15,200	10.63 35.00
4.5 m 15.0 ft	kg lb							*14 450 *31,150	*14 450 *31,150	*12 200 *26,400	11 750 25,350	*10 850 *23,550	8850 19,050	*10 000 *20,200	6900 14,750	*7100 *15,600	6300 13,950	11.04 36.67
3.0 m 10.0 ft	kg lb					*23 700 *50,850	23 550 50,800	*16 950 *36,550	15 450 33,300	*13 600 *29,450	11 150 24,050	*11 650 *25,300	8500 18,300	10 200 21,900	6700 14,350	*7450 *16,350	6000 13,200	11.23 37.50
1.5 m 5.0 ft	kg lb					*18 500 *43,650	*18 500 *43,650	*19 000 *41,000	14 500 31,300	*14 850 *32,150	10 600 22,900	*12 400 *26,900	8200 17,600	10 000 21,500	6500 13,950	*8000 *17,600	5850 12,900	11.22 37.50
0.0 m 0.0 ft	kg lb			*7500 *17,000	*7500 *17,000	*18 350 *42,250	*18 350 *42,250	*20 150 *43,550	13 900 29,950	*15 700 *33,950	10 200 22,000	12 300 26,500	7900 17,050	9850 21,150	6350 13,650	*8850 *19,450	5950 13,050	11.00 36.67
-1.5 m -5.0 ft	kg lb			*12 750 *28,700	*12 750 *28,700	*22 250 *50,850	21 000 45,050	*20 350 *44,050	13 600 29,300	15 850 34,050	9950 21,450	12 150 26,100	7750 16,700	9750 21,500	6300 13,650	9700 21,350	6250 13,700	10.57 35.00
-3.0 m -10.0 ft	kg lb	*14 650 *32,700	*14 650 *32,700	*18 400 *41,450	*18 400 *41,450	*25 800 *55,850	21 050 45,250	*19 650 *42,500	13 550 29,200	*15 550 *33,550	9900 21,300	12 100 26,050	7700 16,650		10 650 23,500	6850 15,100	9.88 32.50	
-4.5 m -15.0 ft	kg lb			*25 250 *57,050	*25 250 *57,050	*23 050 *49,750	21 350 45,900	*17 900 *38,550	13 700 29,550	*14 150 *30,400	10 000 21,550				*11 200 *24,650	8000 17,750	8.89 29.17	
-6.0 m -20.0 ft	kg lb					*18 600 *39,750	*18 600 *39,750	*14 600 *30,950	14 100 30,400						*11 050 *24,300	10 450 23,500	7.46 24.17	



ISO 10567



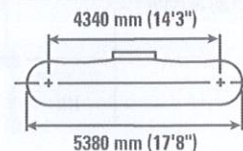
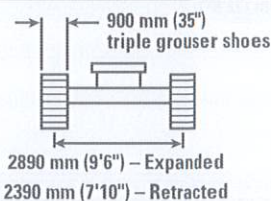
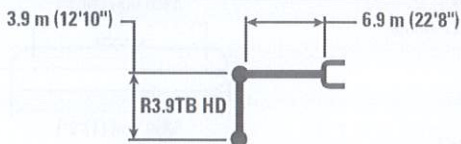
*Indicates that the load is limited by hydraulic lifting capacity rather than tipping load. The above loads are in compliance with hydraulic excavator lift capacity standard ISO 10567:2007. They do not exceed 87% of hydraulic lifting capacity or 75% of tipping load. Weight of all lifting accessories must be deducted from the above lifting capacities. Lifting capacities are based on the machine standing on a firm, uniform supporting surface. The use of a work tool attachment point to handle/lift objects, could affect the machine lift performance.

Lift capacity stays with ±5% for all available track shoes.

Always refer to the appropriate Operation and Maintenance Manual for specific product information.

352F Hydraulic Excavator Specifications

Reach Boom (Long VG Undercarriage) Lift Capacities – Counterweight: 9.0 mt (9.9 t) – Heavy Lift: On



Reach Boom Configuration	1.5 m/5.0 ft		3.0 m/10.0 ft		4.5 m/15.0 ft		6.0 m/20.0 ft		7.5 m/25.0 ft		9.0 m/30.0 ft		m		ft	
	kg	lb	kg	lb	kg	lb	kg	lb	kg	lb	kg	lb	kg	lb	kg	lb
9.0 m / 30.0 ft													*7850	*7850	7.99	25.83
7.5 m / 25.0 ft											*7850	*7850	*7500	*7500	9.06	30.00
6.0 m / 20.0 ft									*11 750	*11 750	*11 050	9200	*7450	*7450	9.78	32.50
4.5 m / 15.0 ft							*15 050	*15 050	*12 900	11 900	*11 650	9000	*7600	7300	10.22	34.17
3.0 m / 10.0 ft					*24 250	24 150	*17 550	15 750	*14 300	11 400	*12 350	8700	*7950	6950	10.43	34.17
1.5 m / 5.0 ft					*25 000	22 650	*19 650	14 950	*15 500	10 950	12 850	8450	*8600	6800	10.42	34.17
0.0 m / 0.0 ft			*9650	*9650	*24 050	22 000	*20 800	14 450	*16 300	10 600	12 600	8200	*9550	6950	10.18	33.33
-1.5 m / -5.0 ft			*15 950	*15 950	*28 050	21 800	*20 900	14 200	16 250	10 400	12 500	8100	*11 050	7350	9.71	32.50
-3.0 m / -10.0 ft			*23 100	*23 100	*26 100	21 900	*19 900	14 150	*15 650	10 350			*12 350	8200	8.96	30.00
-4.5 m / -15.0 ft			*30 200	*30 200	*22 600	22 250	*17 500	14 350	*13 400	10 550			*12 450	10 000	7.84	25.83
-6.0 m / -20.0 ft			*65,100	*65,100	*48,700	47,900	*37,550	30,950	*28,400	22,800			*11 800	*11 800	6.17	20.00



ISO 10567



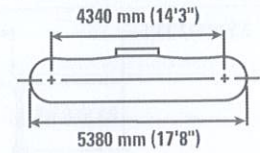
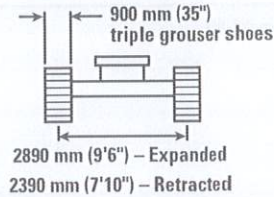
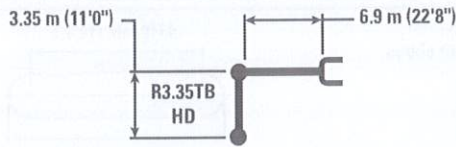
*Indicates that the load is limited by hydraulic lifting capacity rather than tipping load. The above loads are in compliance with hydraulic excavator lift capacity standard ISO 10567:2007. They do not exceed 87% of hydraulic lifting capacity or 75% of tipping load. Weight of all lifting accessories must be deducted from the above lifting capacities. Lifting capacities are based on the machine standing on a firm, uniform supporting surface. The use of a work tool attachment point to handle/lift objects, could affect the machine lift performance.

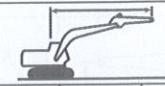

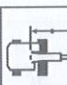

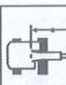

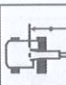

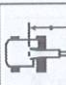

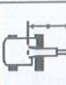

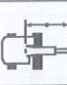
Lift capacity stays with ±5% for all available track shoes.

Always refer to the appropriate Operation and Maintenance Manual for specific product information.

352F Hydraulic Excavator Specifications

Reach Boom (Long VG Undercarriage) Lift Capacities – Counterweight: 9.0 mt (9.9 t) – Heavy Lift: On



		1.5 m/5.0 ft		3.0 m/10.0 ft		4.5 m/15.0 ft		6.0 m/20.0 ft		7.5 m/25.0 ft		9.0 m/30.0 ft				m ft
																
9.0 m 30.0 ft	kg lb													*8950 *19,850	*8950 *19,850	7.45 24.17
7.5 m 25.0 ft	kg lb									*12 000 *26,250	*12 000 *26,250			*8450 *18,700	*8450 *18,700	8.58 28.33
6.0 m 20.0 ft	kg lb									*12 600 *27,450	12 250 26,350	*11 200 *21,550	9150 19,600	*8350 *18,350	*8350 *18,350	9.34 30.83
4.5 m 15.0 ft	kg lb					*21 300 *45,600	*21 300 *45,600	*16 250 *35,100	*16 250 *35,100	*13 750 *29,800	11 850 25,500	*12 300 *26,800	8950 19,250	*8450 *18,600	7800 17,250	9.80 32.50
3.0 m 10.0 ft	kg lb					*26 150 *56,200	23 700 51,100	*18 600 *40,200	15 650 33,700	*15 000 *32,500	11 350 24,500	*12 950 *28,100	8700 18,750	*8850 *19,450	7400 16,300	10.02 33.33
1.5 m 5.0 ft	kg lb					*18 500 *44,050	*18 500 *44,050	*20 400 *44,100	14 950 32,200	*16 050 *34,800	10 950 23,600	12 900 27,750	8500 18,250	*9500 *20,850	7300 16,050	10.01 33.33
0.0 m 0.0 ft	kg lb					*21 500 *49,850	*21 500 47,600	*21 200 *45,900	14 500 31,250	16 550 35,650	10 700 23,000	12 700 27,350	8350 17,950	*10 550 *23,200	7450 16,400	9.76 32.50
-1.5 m -5.0 ft	kg lb			*15 750 *35,600	*15 750 *35,600	*27 550 *59,750	22 100 47,500	*20 900 *45,250	14 350 30,900	16 400 35,350	10 550 22,700	12 650 27,250	8250 17,850	12 150 26,850	8000 17,600	9.27 30.83
-3.0 m -10.0 ft	kg lb			*24 850 *56,150	*24 850 *56,150	*25 050 *54,300	22 300 47,950	*19 450 *42,000	14 400 31,050	*15 250 *32,800	10 600 22,850			*12 800 *28,150	9050 20,050	8.47 28.33
-4.5 m -15.0 ft	kg lb			*26 650 *57,400	*26 650 *57,400	*20 850 *44,900	*20 850 *44,900	*16 300 *34,800	14 700 31,700					*12 500 *27,500	11 300 25,300	7.29 24.17



ISO 10567



*Indicates that the load is limited by hydraulic lifting capacity rather than tipping load. The above loads are in compliance with hydraulic excavator lift capacity standard ISO 10567:2007. They do not exceed 87% of hydraulic lifting capacity or 75% of tipping load. Weight of all lifting accessories must be deducted from the above lifting capacities. Lifting capacities are based on the machine standing on a firm, uniform supporting surface. The use of a work tool attachment point to handle/lift objects, could affect the machine lift performance.

Lift capacity stays with ±5% for all available track shoes.

Always refer to the appropriate Operation and Maintenance Manual for specific product information.

Standard Equipment

Standard equipment may vary. Consult your Cat dealer for details.

ENGINE

- Cat C13 ACERT diesel engine
- Biodiesel capable up to B20
- Meets Tier 4 Final emission standards
- 2300 m (7,500 ft) altitude capability
- Electric priming pump
- Automatic engine speed control
- Standard, economy and high power modes
- Two-speed travel
- Side-by-side cooling system
- Radial seal air filter
- Primary filter with water separator and water separator indicator switch
- Fuel differential indicator switch in fuel line
- 2×6 micron main filters
- 1×10 micron primary fuel line filter

HYDRAULIC SYSTEM

- Regeneration circuit for boom and stick
- Reverse swing dampening valve
- Automatic swing parking brake
- High-performance hydraulic return filter

CAB

- Pressurized operator station with positive filtration
- Mirror package
- Sliding upper door window
- Glass-breaking safety hammer
- Removable lower windshield within cab storage bracket
- Coat hook
- Beverage holder
- Literature holder
- Radio with MP3 auxiliary audio port
- Two stereo speakers
- Storage shelf suitable for lunch or toolbox
- Color LCD display with warning, filter/fluid change, and working hour information
- Adjustable armrest
- Height adjustable joystick consoles
- Neutral lever (lock out) for all controls
- Travel control pedals with removable hand levers
- Two power outlets, 10 amp (total)
- Laminated glass front upper window and tempered other windows

UNDERCARRIAGE

- Grease Lubricated Track GLT4
- Towing eye on base frame
- Heavy-duty track rollers
- Track motor guards

ELECTRICAL

- 80 amp alternator
- Circuit breaker

LIGHTS

- Boom light
- Cab lights with time delay
- Exterior lights integrated into storage box

SECURITY

- Cat one key security system
- Door locks
- Cap locks on fuel and hydraulic tanks
- Lockable external tool/storage box
- Signaling/warning horn
- Secondary engine shutoff switch
- Openable skylight for emergency exit
- Rearview camera

Optional Equipment

Optional equipment may vary. Consult your Cat dealer for details.

ENGINE

- Electric refueling pump with auto shut off
- Starting kit, cold weather, -32° C (-26° F)
- Jump start receptacle
- Quick drains, engine and hydraulic oil

HYDRAULIC SYSTEM

- Control pattern quick-changer, two way
- Additional circuit
- Boom and stick lines
- High-pressure line
- Medium-pressure line
- Cat quick coupler line – high- and medium-pressure capable
- Quick coupler for high pressure
- Tool control system

CAB

- Cab hatch emergency exit
- Seat, high-back air suspension with heater and cooling
- Seat, high-back air suspension with heater
- Seat, high-back mechanical suspension
- Sunscreen
- Windshield wiper, lower with washer
- AM/FM radio
- Air pre-filter
- Travel alarm
- Left foot switch
- Left pedal
- Straight travel pedal

UNDERCARRIAGE

- Long VG undercarriage:
 - 600 mm (24") double grouser shoes, PPR2
 - 750 mm (28") triple grouser shoes, PPR2
 - 900 mm (35") triple grouser shoes, PPR2
- Guard, full length
- Guard, heavy-duty bottom
- Center track guiding guard
- Segmented (3 piece) track guiding guard
- Fabricating idler
- Casting idler

COUNTERWEIGHT

- 8.6 mt (9.4 t) with counterweight removal device
- 9.0 mt (9.9 t)

FRONT LINKAGE

- Bucket linkage
 - TB family without lifting eye
- Long Reach boom
 - 7.4 m (24'3") boom
 - R4.3TB (14'1") stick
- Reach boom
 - 6.9 m (22'8") boom
 - R3.9TB (12'10") stick
 - R3.35TB (11'0") stick

LIGHTS

- Working lights, cab mounted with time delay
- HID lights, cab mounted with time delay
- Halogen boom lights
- HID boom lights

SECURITY

- FOGS, bolt-on
- Guard, cab front, mesh
- Guard, vandalism

TECHNOLOGY

- Cat Grade Control Depth and Slope
- Product Link